

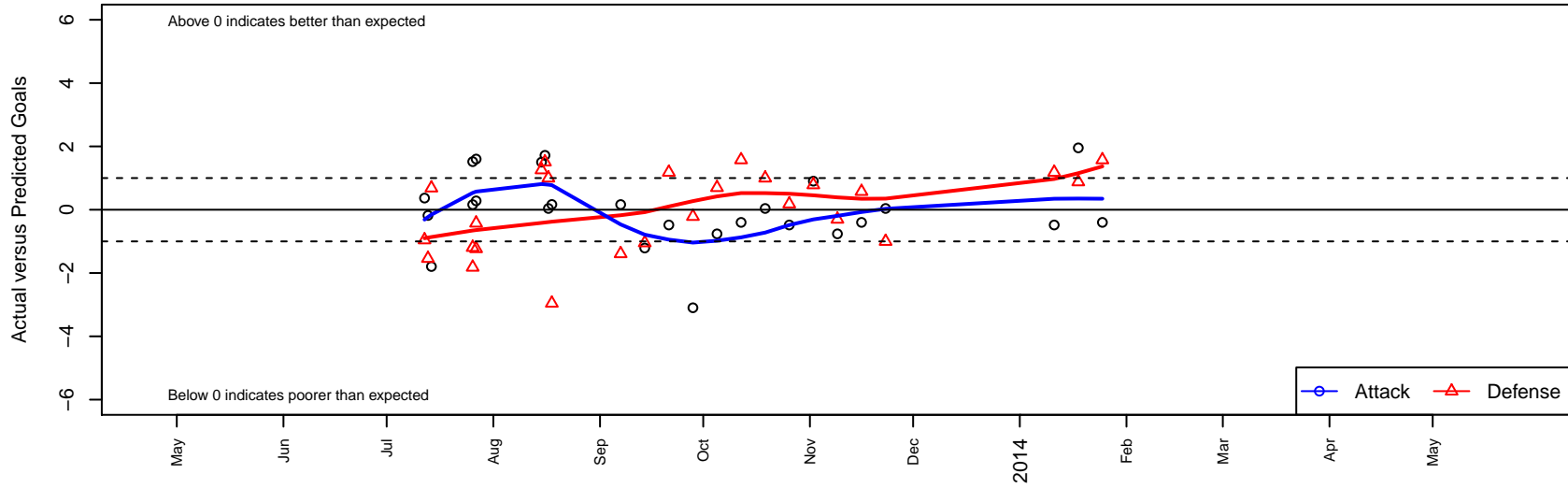
Seattle United W Blue G01

Seattle United Regional
 Seattle, WA
 G01 total strength=553
 attack=0.47 defense=0.38
 fall league = NPSL G12D1
 alt names used:

Venues played:
 Seattle Cup GU12
 Crossfire Select Cup GU12 Gold
 Bigfoot Silver U12
 NPSL G12D1
 Founders Cup G01



Seattle United W Blue G01
 Dots are actual minus expected GF (blue circles) and GA (red triangles).
 Blue line is smoothed change in attack strength. Red is smoothed change in defense strength.



	date	home		away		venue	pred.home	pred.away
6955	2014-01-25	Seattle United W Blue G01	1	Crossfire Select Wilkinson G01	0	Founders Cup G01	1.40	1.57
6907	2014-01-18	Washington Timbers Crimson G01	0	Seattle United W Blue G01	4	Founders Cup G01	0.88	2.05
6863	2014-01-11	Seattle United W Blue G01	0	NSC Velocity G01	1	Founders Cup G01	0.48	2.18
6670	2013-11-23	Seattle United W Blue G01	1	Crossfire Select Granston G01	3	NPSL G12D1	0.96	2.00
6580	2013-11-16	Seattle United W Blue G01	1	Crossfire Select Wilkinson G01	1	NPSL G12D1	1.40	1.57
6476	2013-11-09	Kent United Green G01	2	Seattle United W Blue G01	0	NPSL G12D1	1.70	0.76
6334	2013-11-02	Seattle United W Blue G01	4	MIFC Thunder G01	0	NPSL G12D1	3.10	0.79
6181	2013-10-26	Seattle United W Blue G01	0	NSC Velocity G01	2	NPSL G12D1	0.48	2.18
6021	2013-10-19	Crossfire Select Granston G01	1	Seattle United W Blue G01	1	NPSL G12D1	2.00	0.96
5859	2013-10-12	Crossfire Select Wilkinson G01	0	Seattle United W Blue G01	1	NPSL G12D1	1.57	1.40
5674	2013-10-05	Kent United Green G01	1	Seattle United W Blue G01	0	NPSL G12D1	1.70	0.76
5503	2013-09-28	MIFC Thunder G01	1	Seattle United W Blue G01	0	NPSL G12D1	0.79	3.10
5366	2013-09-21	NSC Velocity G01	1	Seattle United W Blue G01	0	NPSL G12D1	2.18	0.48
5199	2013-09-14	Seattle United W Blue G01	0	Seattle United S Black G01	2	NPSL G12D1	1.21	0.95
5047	2013-09-07	Seattle United W Blue G01	1	Lake Hills Extreme G01	3	NPSL G12D1	0.84	1.61
4824	2013-08-18	Seattle United W Blue G01	1	Orting FC Pumas G01	4	Bigfoot Silver U12	0.83	1.04
4754	2013-08-17	Seattle United W Blue G01	1	Crossfire Select Granston G01	1	Bigfoot Silver U12	0.96	2.00
4717	2013-08-16	Seattle United W Blue G01	3	RSA Elite Heather G01	0	Bigfoot Silver U12	1.28	1.51
4704	2013-08-15	Seattle United W Blue G01	3	WPFC Fury Black G01	0	Bigfoot Silver U12	1.50	1.26
4366	2013-07-27	Crossfire Select Wilkinson G01	2	Seattle United W Blue G01	3	Crossfire Select Cup GU12 Gold	1.57	1.40
4380	2013-07-27	Seattle United W Blue G01	1	Wenatchee Fire Black G01	3	Crossfire Select Cup GU12 Gold	0.72	1.77
4338	2013-07-26	Seattle United W Blue G01	2	FC Edmonds Elite G01	2	Crossfire Select Cup GU12 Gold	1.84	0.81
4345	2013-07-26	NSC Velocity G01	4	Seattle United W Blue G01	2	Crossfire Select Cup GU12 Gold	2.18	0.48
4192	2013-07-14	Seattle United W Blue G01	0	Blackhills FC Black G01	0	Seattle Cup GU12	1.79	0.69
4178	2013-07-13	Harbor Premier Green G01	8	Seattle United W Blue G01	0	Seattle Cup GU12	6.46	0.18
4146	2013-07-12	PS Slammers Black G01	3	Seattle United W Blue G01	1	Seattle Cup GU12	2.05	0.63